



Philips EssentialCare
Straightener

Ceramic Tourmaline plates
Longer plates (100mm)
210C professional temperature



HP8321/00



Glossy and sleek with shine

with 100mm long plates

Specially designed for speed and ease of use, the longer plates of the new Essential Care straightener allow you to get the straight look you want faster, while being gentle on your hair.

Sleek style

- Long plates for fast and easy straightening
- 210°C professional high heat for perfect results
- Shiny and frizz-free hair

Ease of use

- Closing lock to close the handle for easy and safe storage
- 1.8 m power cord
- Fast heat up time, ready to use in 60 seconds
- Universal voltage
- Swivel cord to prevent tangled wires
- 2 years of worldwide guarantee

PHILIPS

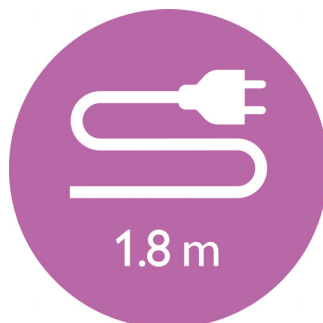
Highlights

Long plates



The longer plates enable a better contact with the hair and help you achieve perfect straightening results in less time.

1.8 m cord



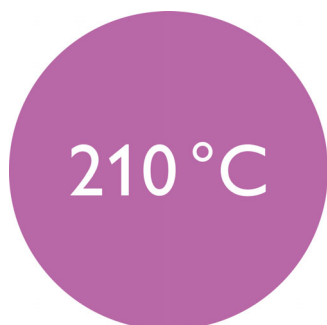
1.8 m power cord

Swivel cord



Useful swivel cord technology rotates the cord to prevent tangled wires.

210°C professional temperature



This high temperature enables you to change the shape of your hair and gives you that perfect look you want.

Handle closing lock



The straightener has a closing lock mechanism. Located at the base of the straightener, this locks plates, making storage quick and easy and helping to protect the straightener from accidental damage.

2 years guarantee



2 years of worldwide guarantee.

Instant heat up



The straightener has a fast heat up time, being ready to use in 60 seconds

Universal voltage



Worldwide voltage for getting the perfect travel companion

Ceramic Tourmaline coating



Ceramic Tourmaline plates emit negative ions which creates shiny, static and frizz-free hair.

Specifications

Technical specifications

- Heating time: 60s
- Cord length: 1.8 m
- Color/finishing: black and silvertint
- Maximum temperature: 210 °C
- Long plates: 28X100mm
- Voltage: Worldwide V

Features

- Temperature: 210 °C

- Swivel cord
- Ion conditioning: No
- Handle lock
- Material plates: Ceramic Tourmaline
- Storage hook
- Swivel cord
- Ceramic Tourmaline coating

Service

- 2-year worldwide guarantee



Issue date 2018-03-28

Version: 1.2.1

© 2018 Koninklijke Philips N.V.
All Rights reserved.

Specifications are subject to change without notice.
Trademarks are the property of Koninklijke Philips N.V.
or their respective owners.

www.philips.com